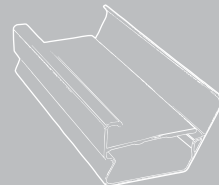
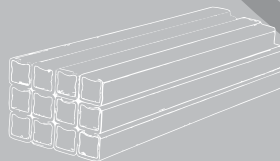


QUALITY

**PERMANENT
PRICE DROP**

LOTUS[®] POULTRY EQUIPMENT



+91 8008992349



www.lotuspoultryequipment.com

ABOUT LOTUS

Established in the year 2016 and fully operational in 2018. Comprising of team with more than **30years of experience** in manufacturing of poultry equipment. Lotus believes in building collaborative relationships that create new success to our customers. At lotus we always feel an urge to innovate, strive to develop great quality products. Clearly, trying new things, the search for new ideas, the willingness to **accept a challenge** and the desire to change our way of life.

Lotus began its journey with manufacturing of poultry layer feed trough and then gradually expanded its product line to chick feed trough & square pipe. In the end of 2018 lotus successfully expanded to chain link, barbed wire, poultry nipple drinkers and is expanding more. **Our mission:** To set a milestone in poultry industry.



Manufacturing Unit - I



Manufacturing Unit - II

📍 ADIBATLA, HYDERABAD, INDIA

Lotus takes great pride in being friendly and approachable entity to create long lasting relationship with our customers and to make a lasting positive mark on the societies in which we operate. We will do our best to help our customers become successful by sharing our experience and knowledge we have in the poultry industry.

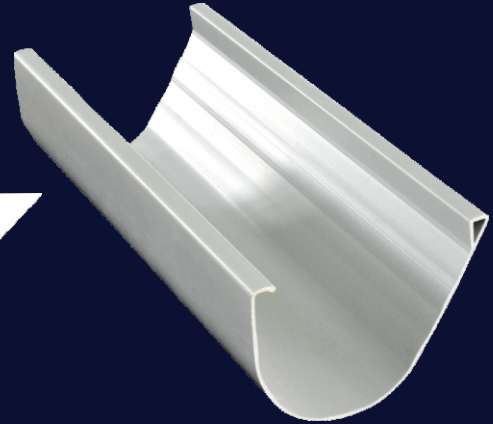
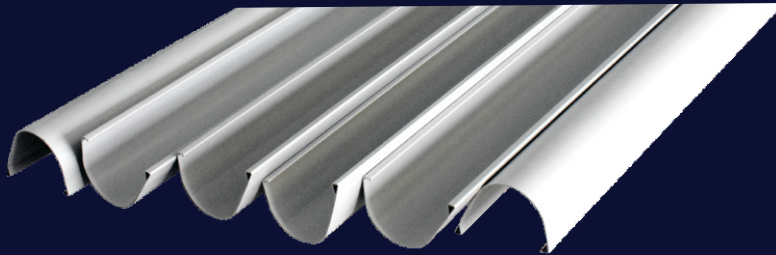
LOTUS PROMISE

Lotus believes that Honesty, integrity and transparency are essential ingredients of a strong and stable enterprise. Hence, we promise **“we will be fair, honest, transparent and ethical in our conduct; everything we do shall stand the test of public scrutiny”**.

LOTUS POULTRY LAYER CAGE FEED TROUGH

LOTUS Layer Feeders

- Integrated with Load Bearing Segment on the side wall of feeder, which gives extreme strength and **helps feeder from getting bent** while in operation.
- Designed with **Ribs** on the inside surface to avoid Twisting and wobbling.



- Non-Contaminating, Ample height for Birds to feed from, open enough for easy filling and cleaning.
- **Rot proof** and the sides are flanged inwards to **prevent food wastage**.
- Designed so as not to break during cage cleaning.
- Solid, high quality products that will give you **years of reliable service** and will withstand all types of climatic conditions.
- Our feeders are regularly **inspected manually** for Flaws such as dimensions, toughness and rigidity.
 - **Dimensions** of LOTUS Layer/ Grower Feeders :
 - Model-1 : 12" Surface Width with 6" Opening for Feed.
 - Model-2 : 12" Surface Width with 4.5" Opening for Feed.
 - Available in any Length as per Customer requirement (18' / 5.487M Standard).
- Our feeder joints will make no bumps at the joint position which will enable easy mixing of leftover feed.
- Accessories such as Feeder Joints and End caps are always readily available.



Feeder Joint

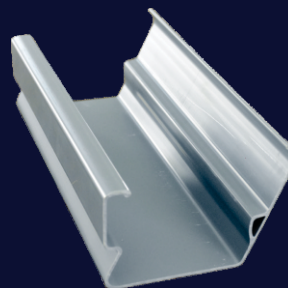
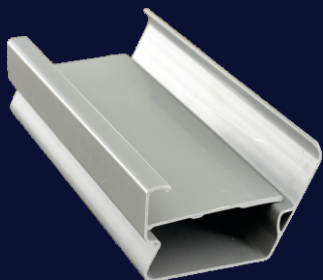


Feeder End Caps

LOTUS POULTRY CHICK CAGE FEED TROUGH

LOTUS Chick Feeders:

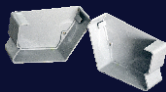
- Integrated with Integrated Feed Level Adjustment Steps on the side walls of feeder, which gives the ability to temporarily shift the bottom level of feeder upwards, so **chicks can feed from DAY 2**.



- Non-Contaminating, Ample height for Chicks to feed, open enough for easy filling, mixing & cleaning.
- Suitable for holding all types of poultry feed.
- **Rot proof** and the sides are flanged inwards to **prevent food wastage**.
- Designed with **No Sharp Edges**, hence very comfortable for Chicks.
- Solid, Steady, High quality product that gives **years of reliable service at all climatic conditions**.
- Our feeders are regularly **inspected manually** for Flaws such as Dimensions, toughness, rigidity.

Dimensions of LOTUS Chick Feeders :

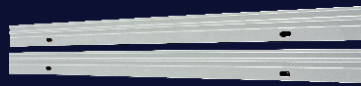
- 10" Surface Width with 4" Opening for Feed.
 - Available in any Length as per Customer requirement (18' / 5.487M Standard).
- LOTUS manufactures its chick Feeders on Sophisticated machinery with higher efficiency. This delivers **more output and less wastage** which reduces Production cost. This **Saved cost is passed on to our customers**.
 - Accessories such as Feeder Joints and End caps are always readily available.



End Caps



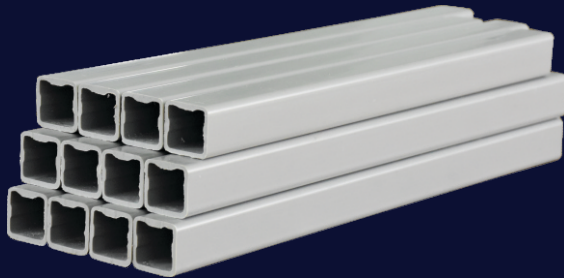
Feeder Joint



Front Flat

LOTUS POULTRY CAGE SQUARE PIPES

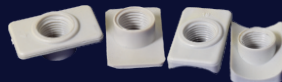
- Designed with Ribs on 3 Sides for **extra strength** to the pipe compared to only 1 Rib for Conventional Square Pipes.
- Hold **6% more water** than conventional Square pipes of same size. This additional 6% water will help to keep **water temperature in pipe more Optimal**.
- Our **Grey PVC pipe blocks more light to Minimize algae growth** inside the pipe.



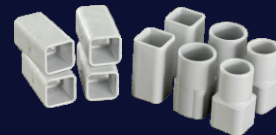
- More flat at bottom; this helps **saddles to stick more firmly** compared to conventional square pipes.
- Made in **Smooth finish** internally and externally, allows **No dust particles** to stick inside.
- Non contaminating, Tougher and rigid. Made from high quality raw materials which give years of **reliable service at all climatic conditions**.
- Our Pipes are regularly **inspected manually** for Flaws such as Pipe Leakage, Saddle Fixing, and Coupler Tightness.

Dimensions of Lotus Square Pipe : 22 mm X 22 mm.

- Available Sizes of Saddle Fixed Square Pipe : 9", 10", 15", 17", 18", 20", 24".
- Available Lengths of Lotus Plain Square Pipe: 180", 187", 192".
- Any other sizes are exclusively customized as per Customer requirement.
- LOTUS manufactures its Square Pipes on Sophisticated machinery with higher efficiency. This delivers more output and less wastage which reduces Production cost. This **Saved cost is passed on to our customers**.
- Accessories such as Saddles, Couplers, & Square to $\frac{1}{2}$ " or $\frac{3}{4}$ " Round Converter Couplers are always readily available.



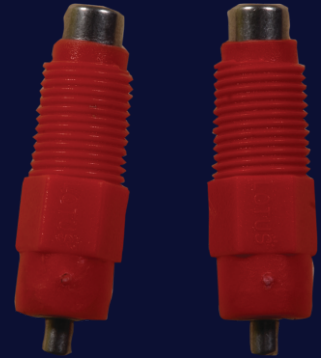
Square & Round Saddles



Square Couplers & Square to Round Couplers

LOTUS POULTRY CAGE NIPPLE DRINKERS

- All metal parts are made of **high quality water grade stainless steel**.
- Plastic part (poly threaded body) is made of high quality engineering plastic material.
- All parts are **corrosion resistant** and UV Resistant.
- Better litter / manure management.
- **Leak proof**, precision design, and strong structure.
- Feather light opening. Hence, comfortable for bird.
- Delivers **optimum quantity of water** for bird.
- Guarantees long service life with reliable flow.
- “Low Flow” & “High Flow” Variants.
- **Less maintenance** and cleaning required.

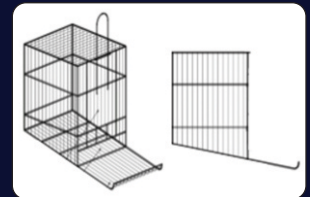
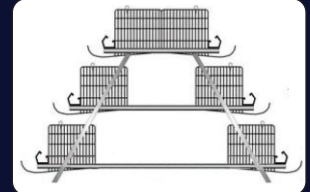


LOTUS POULTRY CAGES

- Superior Corrosion resistant with **heavy coated GI Wire**.
- Easy to assemble & operate, comfortable access for birds to feed and water.
- **Better standing area**, good ventilation, and low mortality rate.
- Reduces bird foot and leg injuries. **Improves egg quality** as birds will be healthier.
- Improved floor slope for easy egg roll out, and distant egg tray helps **protect eggs** from bird damage.
- Effortless maintenance after the end of every batch.

Range of Cages Available:

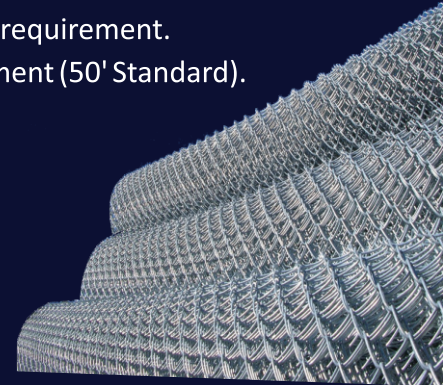
- Layer Cages : Chick – Grower – Layer.
- Breeder Cages : Chick – Grower - Parent.
- Our high quality products will give you **years of reliable service**.



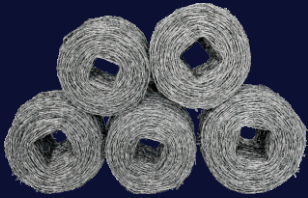
LOTUS CHAIN LINK

- Rigid, Flexible, Durable and made in High quality GI Wire. Can last for **longer period of time**.
- Flat surface, and easy to install. Moisture and humidity resistant.
- Suitable for all types of climatic conditions **and less maintenance** cost.
 - Width of Mesh: Any width between 1' – 13'. As per customer requirement.
 - Length of Roll: Available in any Length as per Customer requirement (50' Standard).

Wire Size	Coating	Mesh Size					
		1"X1"	1¼"X1¼"	1½"X1½"	2"X2"	3"X3"	4"X4"
16 Guage	90 GSM	✓	✓	✓	✓		
14 Guage	90, 270 GSM			✓	✓	✓	
12 Guage	90, 270 GSM				✓	✓	✓
10 Guage	90, 270 GSM				✓	✓	✓



LOTUS BARBED WIRE



- Available in Galvanized Iron wire. Can last for **longer period of time**.
- 4-point barbed wire. Two barb wires twisted on the line wire.
- Conventional structure with double strand wire (line wire) and barbs.
- **Less maintenance** cost. And adapt to harsh environments.

Specifications:

- Line Wire Diameter : (14 / 14)gauge, (14 / 12)gauge, (12 / 12)gauge.
- Barb Wire Diameter : (14 / 14)gauge, (12 / 12)gauge.
- Distance between Barbs : 3 sizes are available 4", 5" and 6".
- Weight of Roll : (35KG Standard). Other size Available as per Customer requirement.

FREE OF CHARGE DELIVERY SAMPLES

Sample would be delivered at your address


Please Contact: +91-8008991582

FOR DEALERSHIP


Contact: +91-8008991239

Regd Office:

LOTUS ENGINEERING

 206, FCI Colony, Phase-2,
Vanasthalipuram, Hyderabad.
Telangana, India. PIN : 500 070.

Contact:

 +91-8008991239 / 1582 / 2349
+91-9247331656 / +91-9247183844
 info@rrvindustries.com
 www.lotuspoultryequipment.com